

Fig. 40. First trace: active line 204 inches down line. First two spikes are signal traveling down line. Second two spikes are signal reflected back from the open circuit at 270 inches down line. Second trace: passive line. Vertical scale: 10 mV/div. Horizontal scale: 5 ns/div.

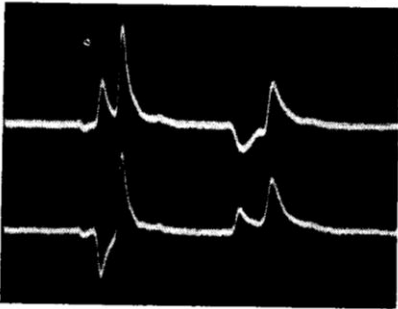


Fig. 41. Same as Fig. 40 but with far end of active and passive lines shorted together.

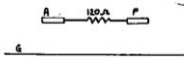
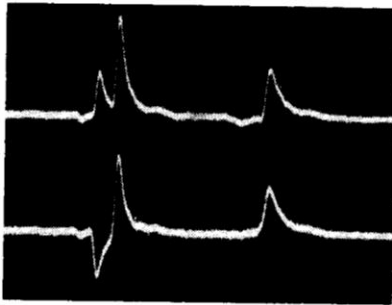


Fig. 42. Same as Fig. 40 but with 120 ohms ($\approx 2Z_{00}$) connected between the far ends of the active and the passive line.

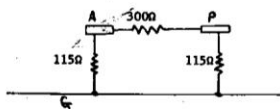
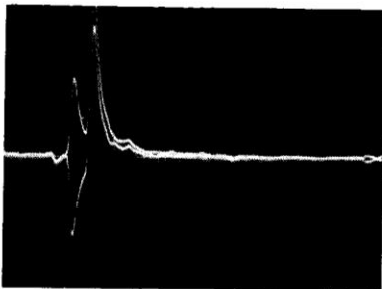


Fig. 43. Same as Fig. 40 but with the two lines terminated in the correct delta of resistors. Vertical scale: Uncalibrated. Horizontal scale: 5 ns/div.