

35

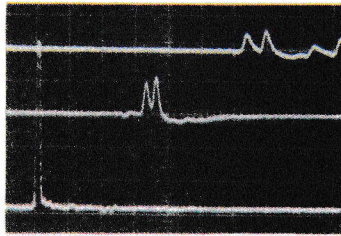


Fig. 35

36

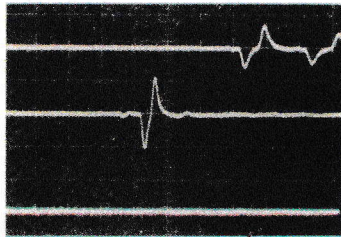


Fig. 36

Figs. 35 and 36. Same as Figs. 28 and 29 but with front end of passive line shorted to ground instead of open.

37

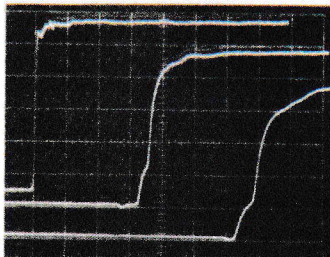


Fig. 37

38

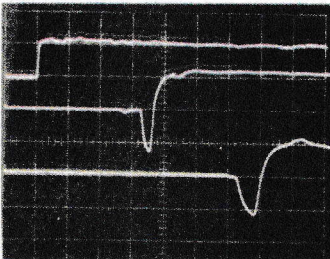


Fig. 38

Figs. 37 and 38. Same as Figs. 28 and 29 but with a step introduced into the active line instead of a narrow spike

39

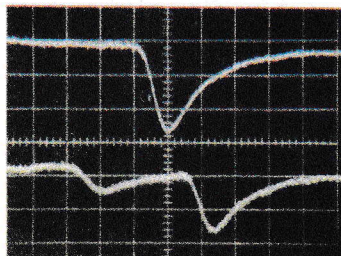


Fig. 39. Pictures taken at the far end of 270-inch-long lines (negative signals). Vertical scale: uncalibrated. Horizontal scale: 500 ps/div.

40

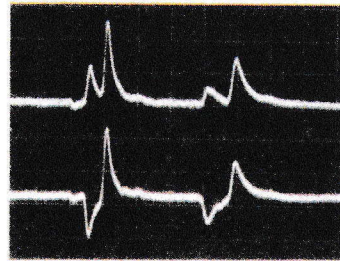


Fig. 40. First trace: active line 204 inches down line. First two spikes are signal traveling down line. Second two spikes are signal reflected back from the open circuit at 270 inches down line. Second trace: passive line. Vertical scale: 10 mV/div. Horizontal scale: 5 ns/div.

41

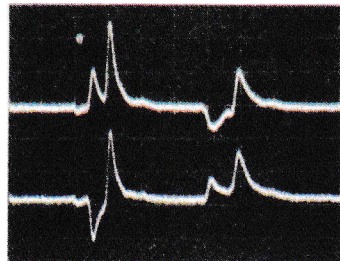


Fig. 41. Same as Fig. 40 but with far end of active and passive lines shorted together.

42

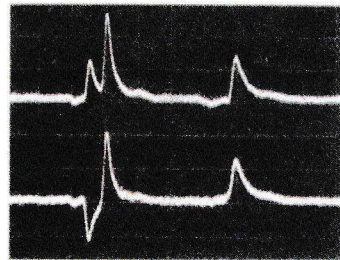


Fig. 42. Same as Fig. 40 but with 120 ohms ($\approx Z_{0c}$) connected between the far ends of the active and the passive line.

43



Fig. 43. Same as Fig. 40 but with the two lines terminated in the correct delta of resistors. Vertical scale: uncalibrated. Horizontal scale: 5 ns/div.

From x147.pdf